

GammaKey

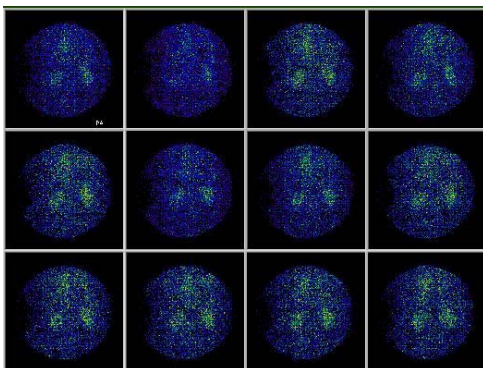
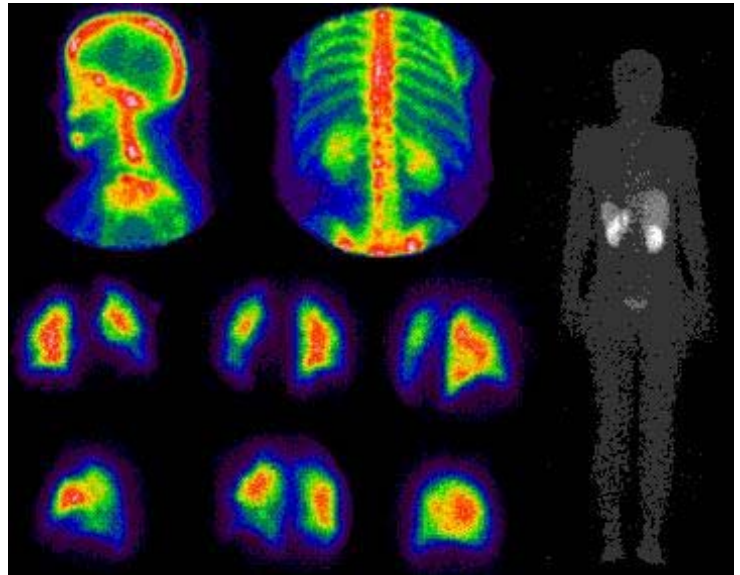
Data acquisition
and analysis
for gamma camera

GammaKey acquisition

Static acquisition (zoom: 1x, 2x)
Dynamic acquisition (zoom: 1x, 2x)
Whole body acquisition
Dual isotope acquisition (static and dynamic)
Frame format: 32x32, 64x64, 128x128, 256x256
Real time visualization

Technical data

Count rate (max): 200 kHz
A/D conversion per channel: 2 μ s
Total A/D conversion time: 4 μ s



GammaKey data analysis

Image processing and manipulation

Static and dynamic analysis

- Regular and neregular ROIs
- Automatic detection of ROIs
- Calculation of ROIs activities
- Dynamic curves

Whole body

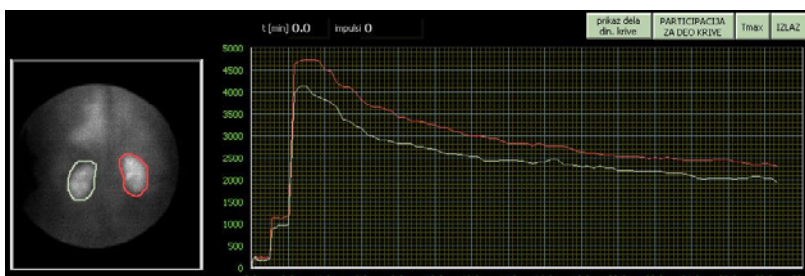
- Review and correction

Dual isotope analysis:

- ADD/SUB of images

Flood correction

Slice analysis



Components of GammaKey acquisition system

- Brand name computer and peripherals
- Certified A/D board from National Instruments
- Database / Microsoft Access 2003
- Gamma Key software from “Una Sistemi”, Belgrade
- Installation of the system and testing
- Manual integrated in the menu

Systems available

Level 1: One Win OS based platform with the data acquisition system, B&W or Color printer, GammaKey software, database, Internet ready

Level 2: Two Win OS based platforms (one for acquisition/image analysis, one for data analysis connected with the acquisition system), B&W or Color printer, GammaKey software, database, Internet ready

Level 3: System for nuclear medicine composed of several acquisition and analysis stations connected (Intranet), Internet ready

Warranty: 1 year for parts and work

Customer support: 48 hours during the warranty period

Extended services: Development of new routines for special requirements in diagnostics and data manipulation by the development team from the University of Belgrade, Faculty of Electrical Engineering, Belgrade, Serbia (on request)

Education of personal: on request

References:

*Institute for Nuclear Medicine, Clinical Center of Novi Sad, Novi Sad, Serbia;
Institute for Nuclear Medicine, Clinical Center of Serbia, Belgrade, Serbia*

System Development:

The Gamma Key software was developed in close collaboration with the Faculty of Electrical Engineering, University of Belgrade, Belgrade, Serbia (piperski@etf.bg.ac.yu)